



# 120W (1/6 HP)

## TERMINAL BOX TYPE REVERSIBLE MOTORS Frame size 90mm sq. (3.54 in. sq.)

Single-Phase

BOX TYPE

### SPECIFICATIONS

30MIN. DUTY, INSULATION CLASS A or E, 4POLES

Model	Output		Voltage (V)	Frequency (Hz)	Rated						Starting Torque			Capacitor ( $\mu$ F)
	(HP)	(W)			Input (W)	Current (A)	Torque			Speed (rpm)	(kg-cm)	(N-m)	(oz-in)	
							(kg-cm)	(N-m)	(oz-in)					
<b>L9R120□C HTB</b>	1/6	120	1 $\varnothing$ 100	50	280	2.5	9.4	0.921	130.54	1250	7.5	0.735	104.15	40
				60	280	2.6	7.6	0.745	105.54	1550	7.5	0.735	104.15	
<b>L9R120□D HTB</b>	1/6	120	1 $\varnothing$ 200	50	280	1.20	9.4	0.921	130.54	1250	7.5	0.735	104.15	10
				60	280	1.32	7.6	0.745	105.54	1550	7.5	0.735	104.15	
<b>L9R120□B HTB</b>	1/6	120	1 $\varnothing$ 220	60	280	1.25	7.6	0.745	105.54	1550	8.5	0.833	118.04	9
<b>L9R120□E HTB</b>	1/6	120	1 $\varnothing$ 115	60	280	2.6	7.4	0.725	102.76	1600	7	0.686	97.21	
<b>L9R120□X HTB</b>	1/6	120	1 $\varnothing$ 220~240	50	280	1.15	9.4	0.921	130.54	1250	8.3	0.813	115.26	9

\* Model in grey screen represents the motors with THERMALLY PROTECTED according to UL regulation.

\* Model in dark grey screen represents the motors with THERMALLY PROTECTED according to CE regulation.

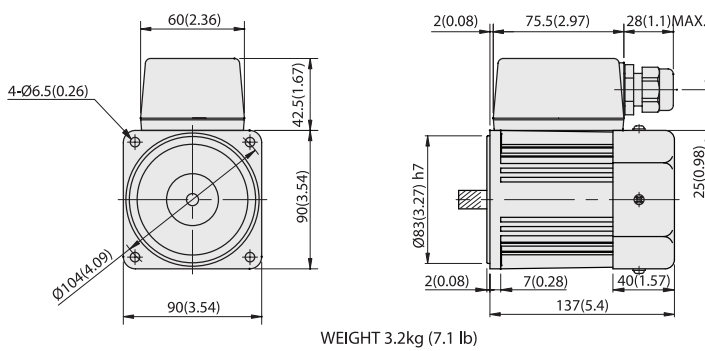
\* In case of some models certified for export, the special cord like CE or UL is added after the existing model no. ex) L9I60□XH-CE, L9I60□EH-UL.

\* Insulation class for motors which acquired certificates for export is B.

### DIMENSIONS

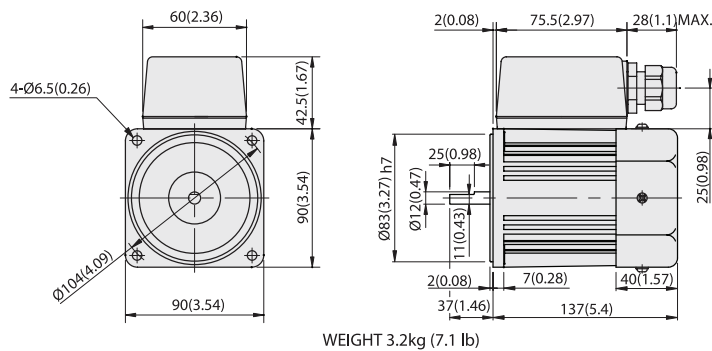
#### L9R120P□ HTB

Unit : mm(inch)



WEIGHT 3.2kg (7.1 lb)

#### L9R120D□ LTB

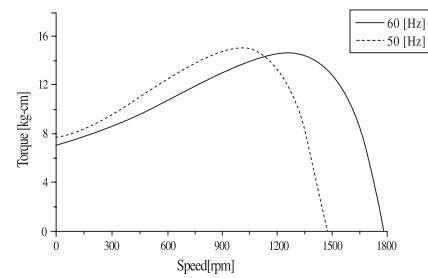


WEIGHT 3.2kg (7.1 lb)



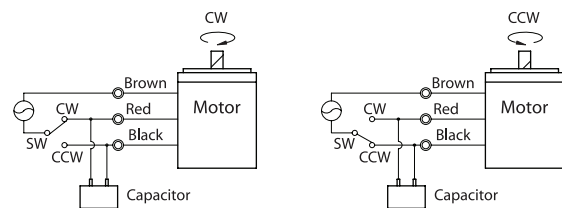
### SPEED-TORQUE CURVE

Single phase L9R120□□ HTB



### CONNECTION DIAGRAMS

Standard or with T.P.



The direction of rotation is seen from the end of motor shaft.